

# SSFA comparison

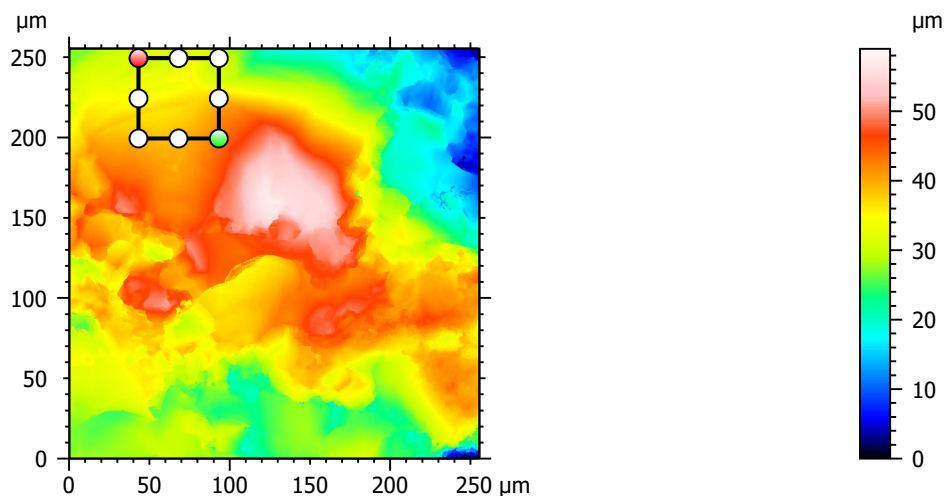
Template to process all lithic surfaces acquired with the Zeiss LSM 800 with the 50x/0.95 objective.

## A. Processing

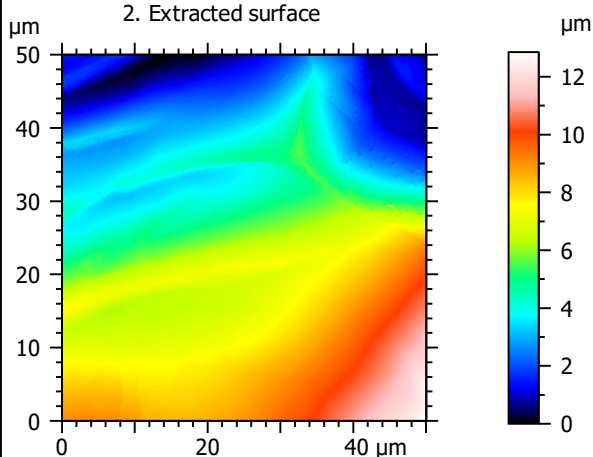
### Identity card

Name:	QTZ3-5_LSM2_50x-0.95_20190731_Area1_Topo		
File path:	D:\Data\3Ddata\SSFA\Lithics\Original_surfaces\QTZ3-5_LSM2_50x-0.95_20190731_Area1_Topo.sur		
Created on:	7/31/2019 11:48:13 AM		
Studiable type:	Surface		
Axis:	X		
Length:	255.5	µm	
Size:	3000	points	
Spacing:	0.08519	µm	
Axis:	Y		
Length:	255.5	µm	
Size:	3000	points	
Spacing:	0.08519	µm	
Axis:	Z		
Layer type:	Topography		
Length:	58.99	µm	
Size:	65532	digits	
Spacing:	0.0009001	µm	
NM-points ratio:	0.000 % (0 Pts)		

### 1. Acquired surface

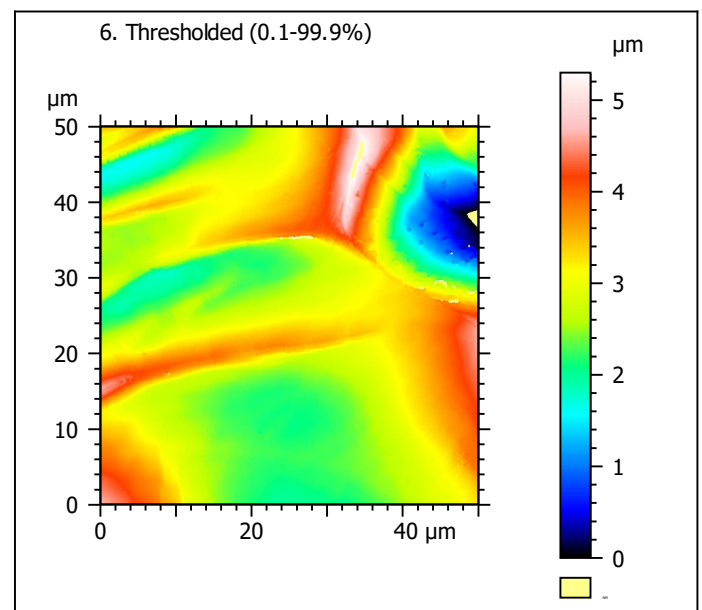
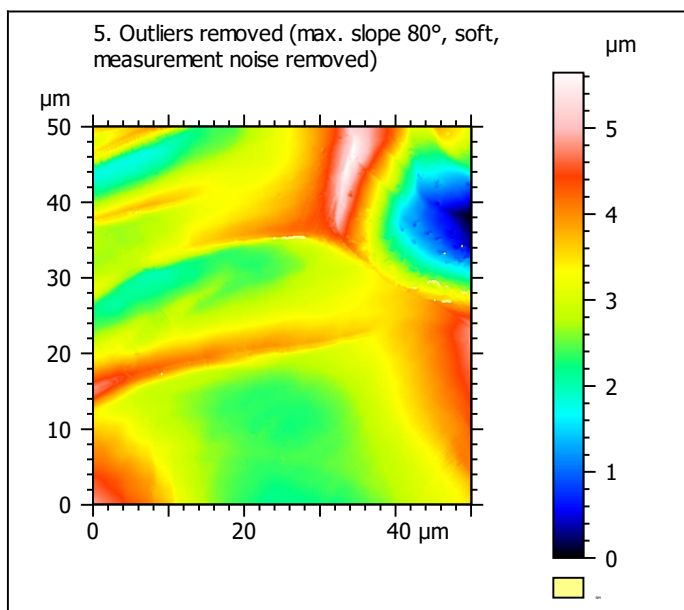
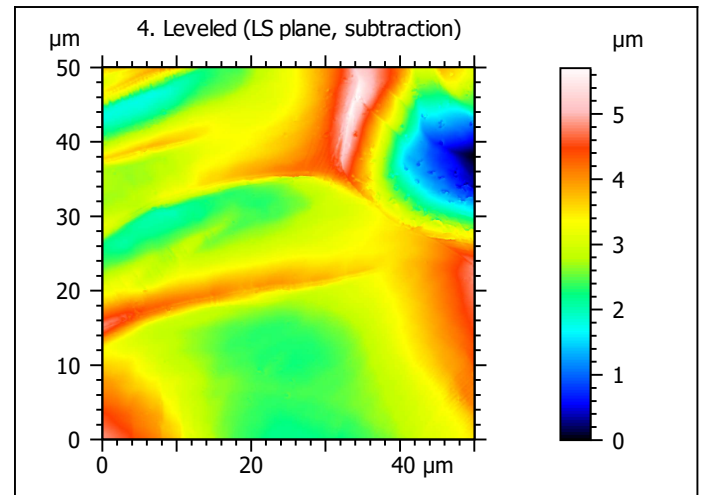
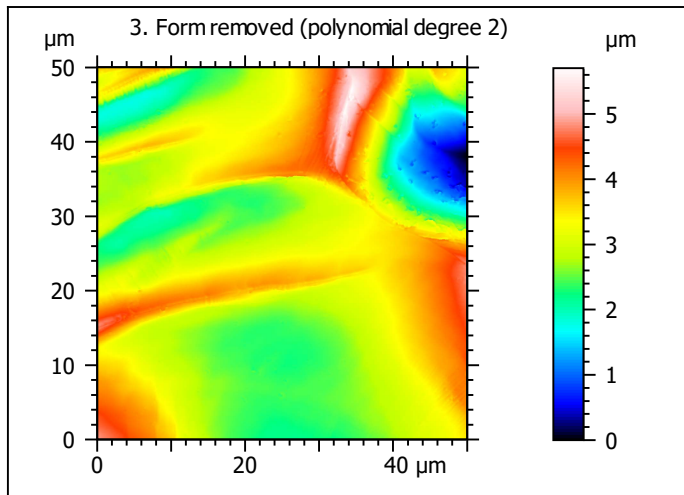


### 2. Extracted surface



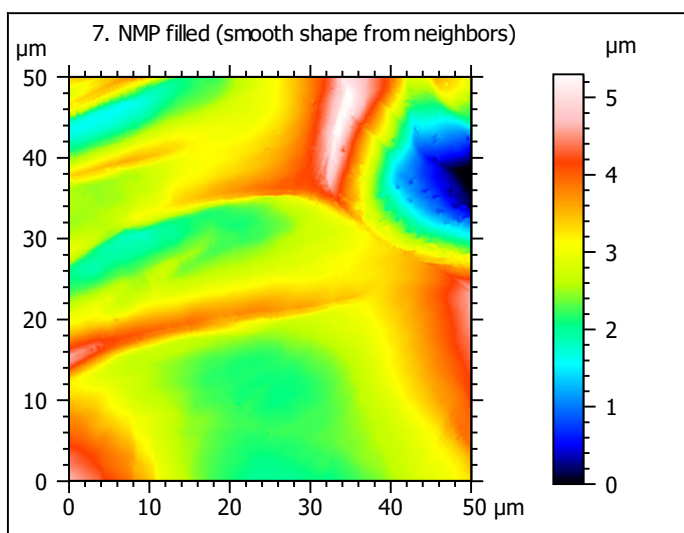
### Identity card

Name:	QTZ3-5_LSM2_50x-0....opo > Extracted area		
Axis:	X		
Length:	50.00	μm	
Size:	588	points	
Axis:	Y		
Length:	50.00	μm	
Size:	588	points	
Axis:	Z		
Layer type:	Topography		
Length:	12.85	μm	
Size:	14279	digits	
NM-points ratio:	0.000 % (0 Pts)		

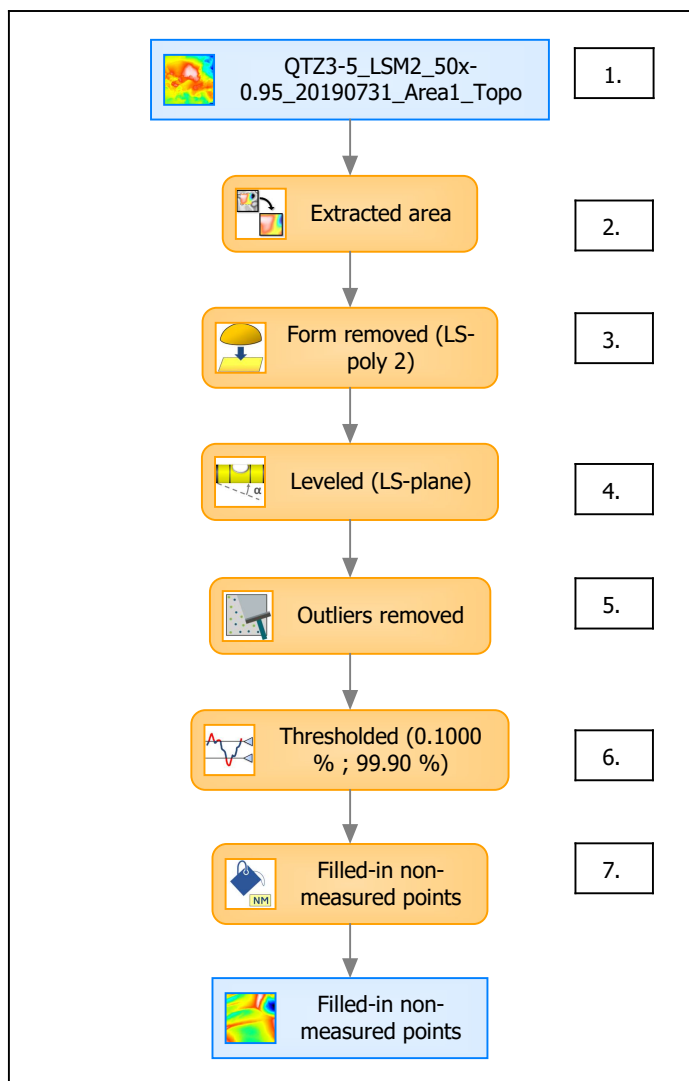


Identity card	
Name:	QTZ3-5_LSM2_50x-0....e) > Outliers removed
Axis:	Z
NM-points ratio:	0.1284 % (444 Pts)

Identity card	
Name:	QTZ3-5_LSM2_50x-0....0.1000 % ; 99.90 %)
Axis:	Z
NM-points ratio:	0.3271 % (1131 Pts)



## B. Summary



### Identity card

Name: QTZ3-5\_LSM2\_50x-0.95\_20190731\_Area1\_Topo > Extracted are...resholded (0.1000 % ; 99.90 %) > Filled-in non-measured points

Studiabale type: Surface

#### Axis: X

Length: 50.00  $\mu\text{m}$

Size: 588 points

Spacing: 0.08519  $\mu\text{m}$

#### Axis: Y

Length: 50.00  $\mu\text{m}$

Size: 588 points

Spacing: 0.08519  $\mu\text{m}$

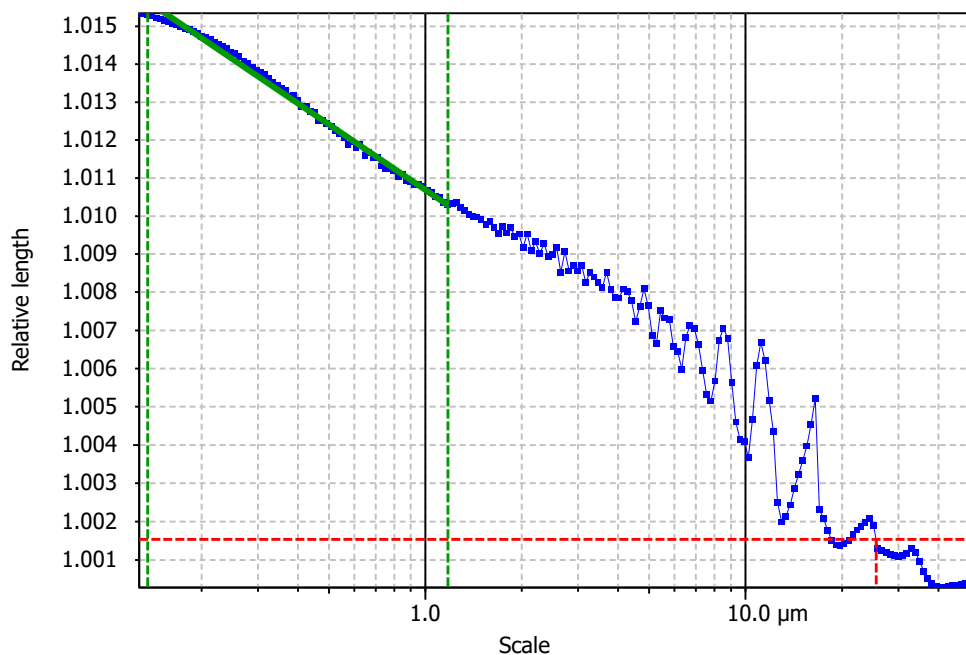
#### Axis: Z

Layer type: Topography

Length: 5.299  $\mu\text{m}$

Size: 5887 digits

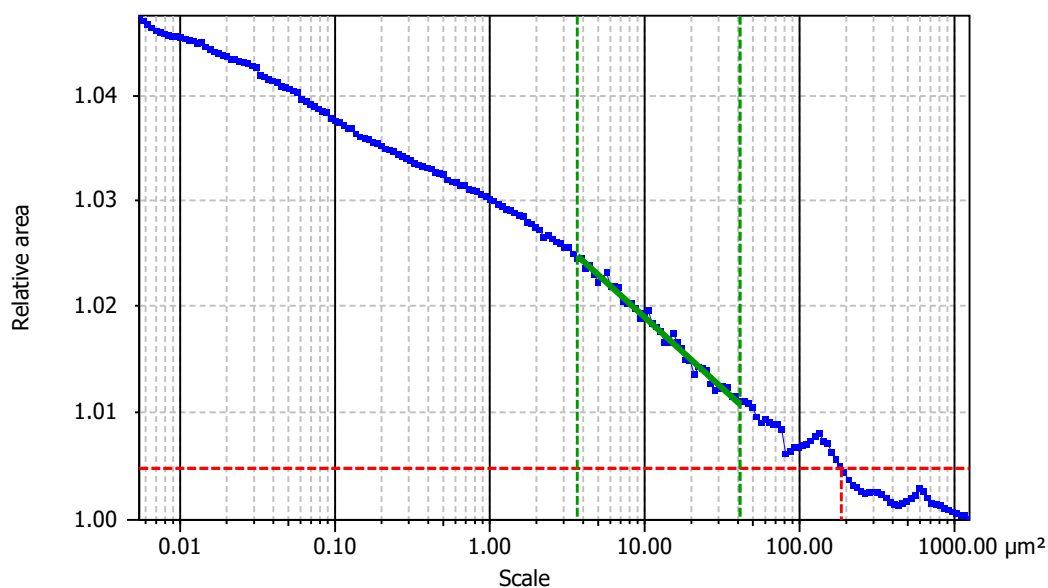
Spacing: 0.0009001  $\mu\text{m}$

**Information**

Method	Length-scale (rows)
--------	---------------------

**Parameters**

Parameters	Value	Unit	Comment
epLsar	0.006007		Length-scale anisotropy (Sfrax) (1.8 μm, 5°)
NewEplsar	0.02011		Length-scale anisotropy (1.8 μm, 5°)

**Information**

Method	Area-scale (four corners)
--------	---------------------------

**Parameters**

Parameters	Value	Unit	Comment
R <sup>2</sup>	0.9873		Reg. coefficient R <sup>2</sup>
Asfc	5.671		Fractal complexity
Smfc	9.900	μm <sup>2</sup>	Scale of max complexity
HAsfc9	0.8619		Heterogeneity of Asfc (3x3)
HAsfc81	1.592		Heterogeneity of Asfc (9x9)